

PistenBully®

GreenTech

## PistenBully 300 Polar GreenTech

The all-rounder for working 365 days a year



**GREENTECH**



**RISING TO  
EVERY CHALLENGE**



⊕ **Service**

- 15 service centres in Germany
- More than 135 service centres worldwide
- Always there for you, 24 hours a day / 7 days a week / 52 weeks a year
- Rapid support and delivery of spare parts
- Comprehensive range of training and advisory services

⊕ **Safety**

- ROPS-certified cab
- Good panoramic vision
- Low centre of gravity
- Xenon worklights

⊕ **Workplace**

- Comfortable cab for 2 persons
- Ergonomic working so that you don't get tired
- Easy access through large doors
- Air conditioning is an optional extra

⊕ **Quality** that knows no compromise

- High PistenBully quality standards
- Top-quality components

⊕ **Sophisticated technology** for reliable and precise working

- Fuel consumption from 10l per hour
- Planetary gear unit with up to 9 t thrust
- Adapted cooling system for ambient temperatures of up to +40 °C
- Transport and working width from 3 m
- Various track types and widths available, from 3 – 4.2 m outside width, depending on operating conditions

⊕ **Designed for sensitive terrain**

- High agility
- High level of traction, ensuring the machine keeps going when wheeled vehicles have to stop



## Silage clamping The perfect solution

The PistenBully GreenTech is the ideal vehicle for clamping silage. With its amazing agility, its unparalleled thrust and its precision, the PistenBully GreenTech operates far more efficiently than wheeled vehicles. An investment that pays off in the long term!

And the PistenBully GreenTech has even more to offer: The low centre of gravity allows the PistenBully GreenTech to drive along at an angle, as it prevents the vehicle slipping or toppling over to one side, thus offering maximum safety for the driver. In addition, its climbing power allows the building of higher silo superstructures than with conventional wheeled vehicles.

### The advantages of the PistenBully GreenTech:

- Extremely precise blade control (12 functions)
- Greater operating comfort through easy vehicle handling
- Flexible, wide spreading, up to 5 m in width
- Can compact anywhere
- Transport width including X-Track chains 3 m
- Perfect view of the unique GreenTech blade
- ROPS-certified cab
- View of the track from the driver's seat allowing the operator to run flush to the clamp walls, ensuring compaction right across the shoulders of a clamp

### Application:

- Simple and precise blade control allows silage to be deposited in thin layers of 15–20 cm
- A particular advantage: The track's running wheels drive over the track cleats repeatedly, creating a shudder effect which further compacts the silage and prepares it perfectly for storage
- The maximum torque of 2,000 Nm is already available at just 1,200–1,400 rpm, which reduces fuel consumption and operating costs



## Landfill and earthwork applications For large push projects

Above and beyond its use in winter, its strength and versatility make the PistenBully GreenTech suitable for an increasing number of applications on the toughest gradients of up to 100 %. For example: with a laser-controlled blade, the PistenBully can push layers of gravel both uphill and downhill with a tolerance of up to +/- 1 cm. And in the same process, rear-mounted compacting plates compact the material. This enables you to achieve production rates of up to 6,000 m<sup>2</sup> per day.

### The advantages of the PistenBully GreenTech:

- Can operate on steep slopes
- Excellent pushing and levelling characteristics in combination with the All-Way-Blade
- No damage to flow channels, insulation or pipe lines being installed
- The topsoil is not too firmly compacted, guaranteeing that it can absorb enough rainwater
- Promotes "interlocking" of the soil during earthwork, allowing revegetation and thus preventing erosion
- Attachment of a range of auxiliary equipment e.g. for revegetation using a rotovator with a grass seeder unit or with a front cultivator and rear-mounted short seeding combination
- Short waiting times after emptying/drainage: able to access land soon after drainage due to its low PSI and low ground disturbance

### Application:

- Construction of landfill sites in accordance with statutory provisions
- Spreading and compacting layers of crushed rock/gravel
- Moving large quantities of sludge in extreme conditions such as reclaiming marsh land in harbour areas
- For shifting and levelling drained pools, applying lime for disinfection, digging drainage trenches and tilling the soil
- With the help of special attachments and superstructures, the PistenBully GreenTech can be used for a wide range of tasks in fish and shrimp farms
- The PistenBully GreenTech is also suitable for constructing oyster beds at low tide



## Harvesting peat

### The all-season machine

The PistenBully GreenTech is a universal machine for peat excavation and can be used for the preparation of both milled and block peat. Its strengths include the exposure and distribution of wet peat and the renaturation and maintenance of old excavation sites. Biotope management in these reclaimed areas is becoming increasingly important, and here, the PistenBully GreenTech offers unique advantages, thus contributing to the conservation of the plant and animal populations typical for these areas and to the preservation of particularly endangered species. It also helps to protect, improve and reclaim their natural habitats, restoring the unique character, diversity and beauty of the landscape.

#### The advantages of the PistenBully GreenTech:

- High thrust of up to 9 tonnes
- Precise blade control
- Large footprint for optimum traction
- Excellent view of the front attachment area
- Low ground pressure for low impact to plants, small organisms and micro-organisms
- The ideal machine for the renaturation of peat fields

#### Can be operated with the following attachments:

- Standard All-Way-Blade up to 5.2 m in width
- Milled peat blade with rounded V2A steel edges and a volume of up to 7 m<sup>3</sup>
- Swath blade with 60° tilt to spread peat windrows
- Front levelling auger for the preparation of peat cutting fields
- Peat millers in various designs
- Loosening cultivator with up to 7 m working width
- Frost cultivator with up to 4.5 m working width
- Mowing and mulching tools for habitat care or the preparation of new excavation areas
- Trench cutters and peat pilers to build walls
- Transport crawler with special rear dump superstructure and increased payload



## Mowing and mulching In any terrain

PistenBully GreenTech means extremely low ground pressure with the greatest possible manoeuvrability. And that makes the PistenBully GreenTech the perfect vehicle for mechanical mowing and mulching in a wide range of sensitive environments. The vehicles work carefully and precisely

- on hillsides
- in ecologically valuable nature reserves, e.g. wetland meadows
- in biotopes or restored heathland/fens
- in inaccessible woodland areas

In short: The PistenBully GreenTech is the specialist machine for comprehensive landscape management!

### The advantages of the PistenBully GreenTech:

- Minimum ground pressure means rapid deployment
- Optional accumulator
- Three attachment areas (front, superstructure, rear)
- Three auxiliary pumps with a capacity of up to 260 litres at 406 bar
- Organic oil can be used instead of hydraulic oil HVD 46
- Cyclone filter to remove foreign matter in the intake air

### Application:

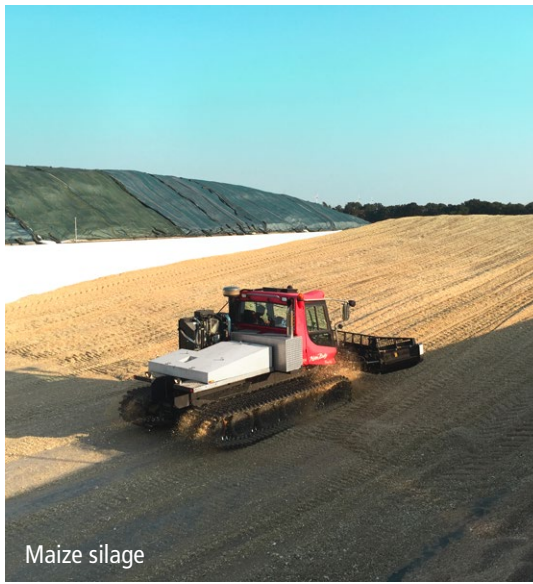
- Attachment of mowing and mulching tools to the front quick-mount system, which is fitted as standard
- Forestry mulchers
- Front or rear 3-point suspension with or without cardan shaft
- Attachments mounted on the trailer
- Flail mower with tipping container or top-mounted round baler

# Other applications

The PistenBully GreenTech is versatile and suitable for a wide range of applications, including some you would probably never have imagined, ...

PistenBully

GreenTech



Maize silage



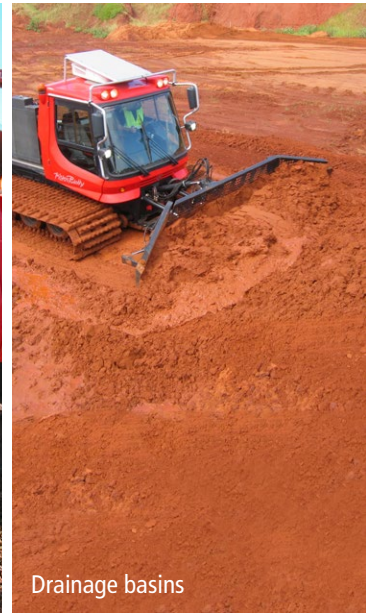
Sawdust



Fire services



Environmental management



Drainage basins



Wood chips



Grain



Sugar production



Salt pan

# Customer testimonials

## From professionals for professionals



### Mulching (Justin Fuß)

"For optimum efficiency and approx. 750 operating hours/year, I use my PistenBully GreenTech not only for clamping silage but also for landscape maintenance. The quick-change system with its versatile movement options is ideal in combination with the forestry mulcher, e.g. for grinding tree stumps. But in combination with the flail mower and tipping container, its all-terrain capability is the strongest argument in favour of the "Bully." It can even be used to remove sludge from pools."



### Silage (Markus Kiffe)

"The thrust and versatility of the PistenBully 300 Park convinced me 6 years ago ... and they still do. Grass, whole crop silage or maize, with its precise blade control, my Bully allows me to safely stack up to 240 t of silage per hour."



### Biogas (Seb Edwards)

"We were so pleased with the performance of our first machine that we now operate 3! They offer power, stability, unrivalled efficiency and outstanding compaction, ensuring that we maximise clamp fill and minimise energy loss through effective clamping. The PistenBully is the "must have" machine for a silage clamp and our operators love them!"



### Peat harvesting (Christoph Behrens)

"I drive a PistenBully because I know I can rely on it. And if its excellent technology should fail, support is available quickly and without complicated procedures. My first 600 Polar with winch has always given me excellent service, and I found it so efficient that I immediately ordered a second one."

Test reports with various silage crops from the DLG and the LAZBW Aulendorf:

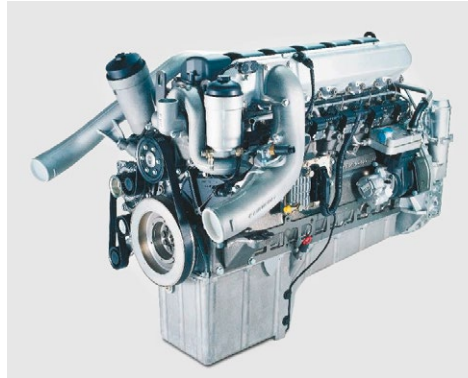
<http://www.pistenbully.com/deu/en/vehicles/greentech/silage.html>

# Equipment

- PistenBully GreenTech vehicles from Kässbohrer Geländefahrzeug AG are designed for the toughest applications in difficult terrain.
- Thanks to their extremely low ground pressure, PistenBully GreenTech vehicles can be used on sensitive surfaces which will not support wheeled vehicles or where wheeled vehicles cannot be used.
- PistenBully GreenTech vehicles can be converted for almost any specialist requirements while retaining their tried-and-tested technical functionality.
- PistenBully GreenTech vehicles are used snow vehicles which are specially converted and reconditioned for summer use.

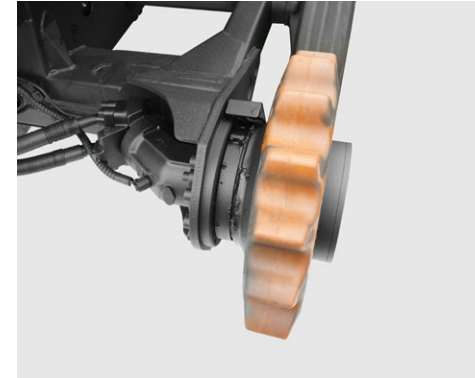
9

## Standard



### Powerful and reliable engine

Robust Mercedes diesel engines ensure reliable and economical working. A concept in which economy and ecology go hand in hand. The OM 457 LA with 430 hp and a displacement of 12 litres reaches its maximum torque of 2,000 Nm at only 1,200 rpm.



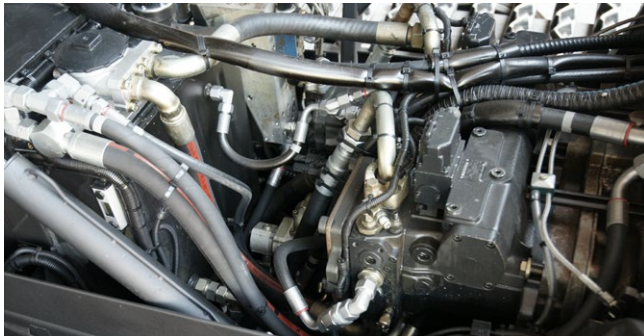
### Hydrostatic drive

The hydrostatic drive offers a level of operating convenience not often found on work vehicles. The standard labyrinth lubrication system isolates the shaft seals against external influences.



### Centralised lubrication system

From the reconditioning level Standard onwards, the labyrinth lubrication system is automatically supplied with lubricant at specific intervals.



### Wide range of attachments

The PistenBully GreenTech is equipped with a separate auxiliary pump with a capacity of up to 260 litres at 406 bar to drive various attachments.



### Simple and precise steering

A semi-circular steering wheel ensures reliable and precise steering. Auxiliary equipment on the front or rear can be operated comfortably with an ergonomically designed multi function joystick.



### Stay cool

The powerful 3-in-1 intercooler for charge air, water and hydraulic oil ensures optimum cooling at temperatures of up to 40°C. Soiling is automatically removed by the temperature-controlled reversible fan.

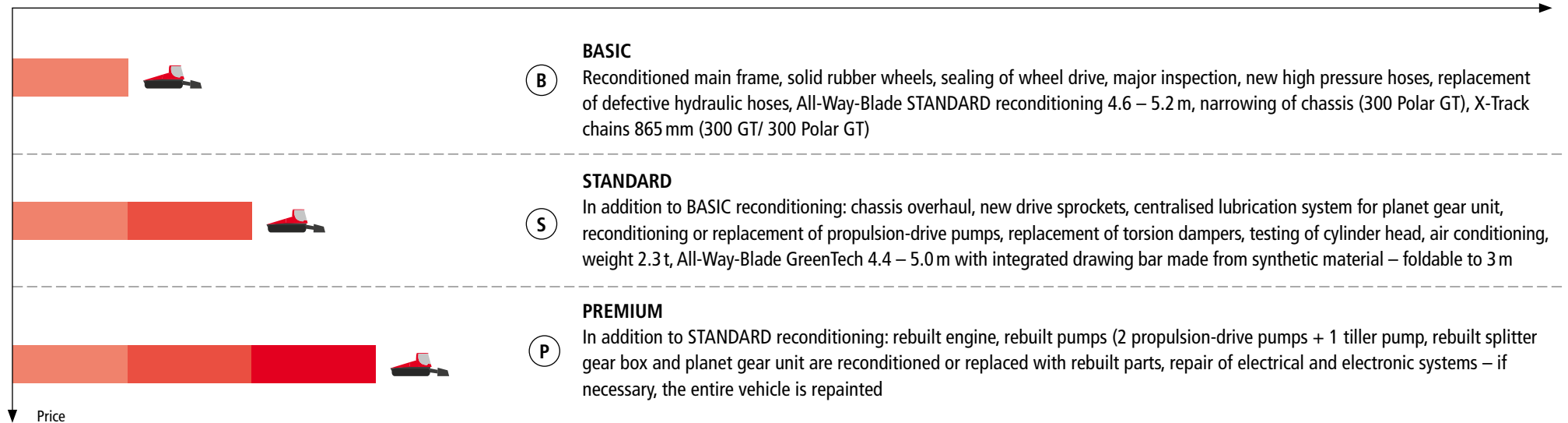
# Reconditioning levels and options

The right vehicle for every application.

## SERIES

Intercooler with reversible fan (oil, water, charge air) on carrier frame, closed underbody and wings, window wiper installation

Condition/equipment



## Options



Mounting plate



GreenTech All-Way-Blade



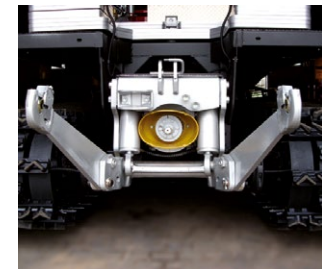
Foldable GreenTech pusher blade (3 m) incl. wear bar made from synthetic material



Air-conditioning system



Additional weight 2.3 t

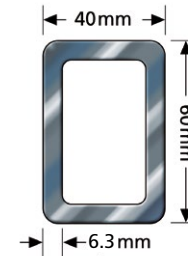
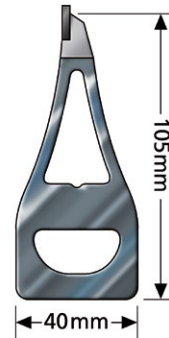
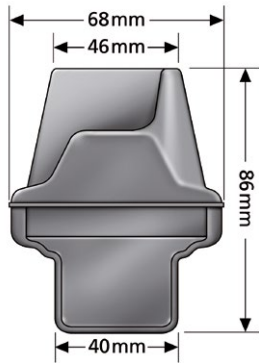


3-point rear power lift, Cat. 2, incl. cardan shaft 1 3/8 hexagonal profile (also as 3-point front power lift)

# X-Tracks, combi tracks or steel tracks

Depending on the specific requirements, the PistenBully GreenTech can be fitted with tracks of various types and widths.

- 3 m outside width, ideal for transport
- 3.7 m outside width for maximum traction



## X-Track chain for silage applications

The high-grip X-Track chain is ideal for silage harvesting and landscape maintenance. The cleat of the X-Track chain combines an aluminium core with vulcanised rubber cladding. The profile of the high-quality rubber cladding gives the chain excellent grip. Rubber cleats ensure quiet running on hard surfaces and asphalt roads.

## Combi track for earthworking and landfills

The combi track, tried and tested in winter applications, has aluminium cleats with Hardox steel edges. The cleats are 105 mm high and up to 1,350 mm in width, giving this track maximum thrust on the ground in special applications such as on landfills or for earthwork.

## Steel track for landscape maintenance

The steel track was also developed for special applications such as peat excavation or work on landfills. Its cleats are 40 mm wide and 60 mm in height, making this track a little less aggressive than the combi track and thus also the perfect choice for landscape maintenance applications.

## Steel drive sprocket

Wear-resistant steel drive sprockets are also available for special applications with high sand content.

Track type	Track width in mm	Vehicle width in mm	No. of cleats	Cleat height in mm	Distance of belts in mm	No. of belts	Belt thickness in mm
X-Track 865 mm	865	3,000	78	86	116.5	3	10 / 15
Steel track 865 mm	865	3,000	78	60	116.5	3	10 / 15
X-Track 975 mm	975	3,100	78	86	116.5	3	10 / 15
Steel track 1,300 mm	1,300	3,600	78	60	116.5	4	10 / 15
Combi track 1,350 mm	1,350	3,700	78	105	116.5	4	10 / 15

# FAQs

## How high is the maximum thrust of the PistenBully GreenTech?

The PistenBully GreenTech can move a maximum of 230–250 tonnes of silage per hour. Above this, a second vehicle is required for compacting.

## Why should a vehicle with a lower weight be better for compacting than a heavier vehicle?

Because the All-Way-Blade spreads and compacts an optimum layer thickness of 10–20 cm. Also due to the special track cleats and the fact that each of the six running wheels drives over each individual track cleat, creating a shudder effect that compacts the silage more effectively than the wheels of a wheel loader.

## Why don't you make the track narrower to further increase the ground pressure?

The power output of the PistenBully GreenTech (330 or 430 hp) is too high for a narrower track. If a narrower track were fitted, there would be a risk of it being damaged by the PistenBully GreenTech.

## Why can't I buy a PistenBully from a ski resort? Surely that would be much cheaper?

A PistenBully as used in a ski resort lacks the special modification of the PistenBully GreenTech. This means that it is not suitable for use in summer, as the winter cooling system is not designed for temperatures over +15°C. Also, it is not equipped with the X-Track chain, which compacts the silage perfectly without damaging the surface. The cleat of the X-Track chain comprises an aluminium core with rubber cladding. The rubber cladding has a profile with a herringbone structure. This allows you to drive the vehicle safely over boggy or marshy ground. The hard metal edges and inserts of winter tracks, which are necessary for driving over snow, would cause severe damage to the floor of a silo.

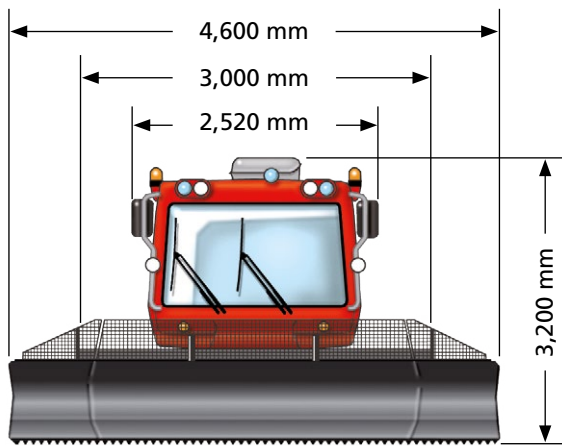
You can find further answers to your questions on our website:

[http://www.pistenbully.com/fileadmin/content\\_pistenbully/modul\\_8\\_download/FAQ\\_s\\_EN.pdf](http://www.pistenbully.com/fileadmin/content_pistenbully/modul_8_download/FAQ_s_EN.pdf)

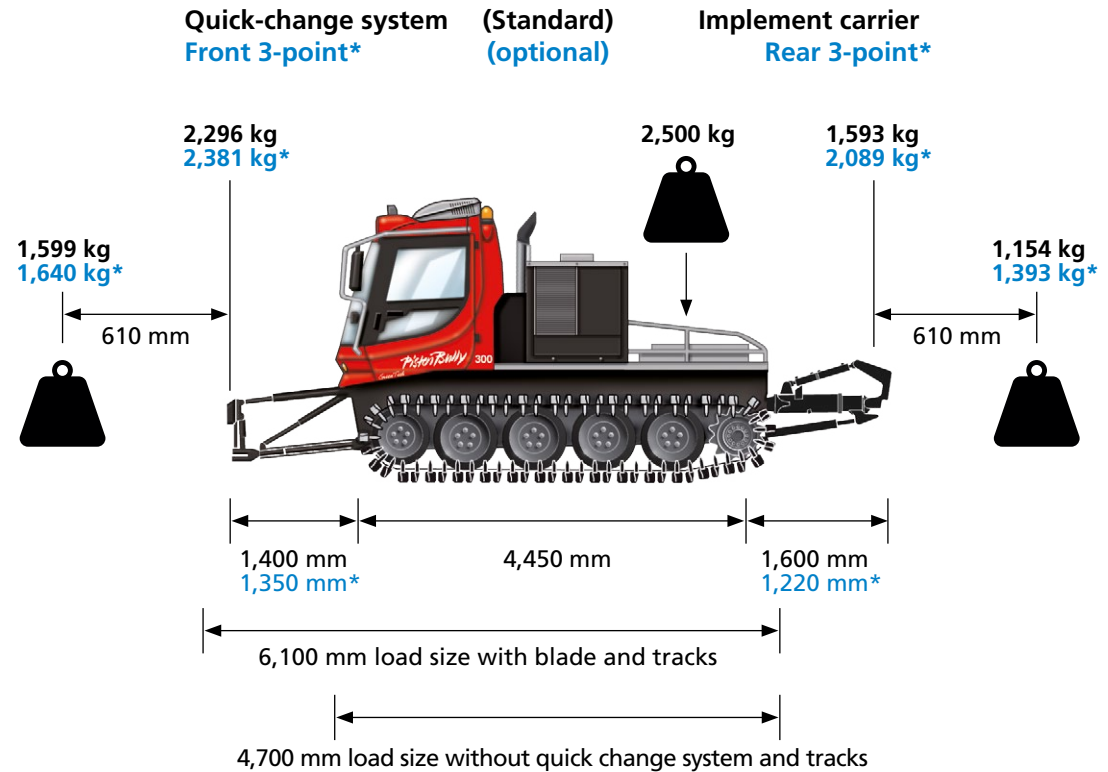
# Technical data

## PistenBully 300 GreenTech / 300 Polar GreenTech

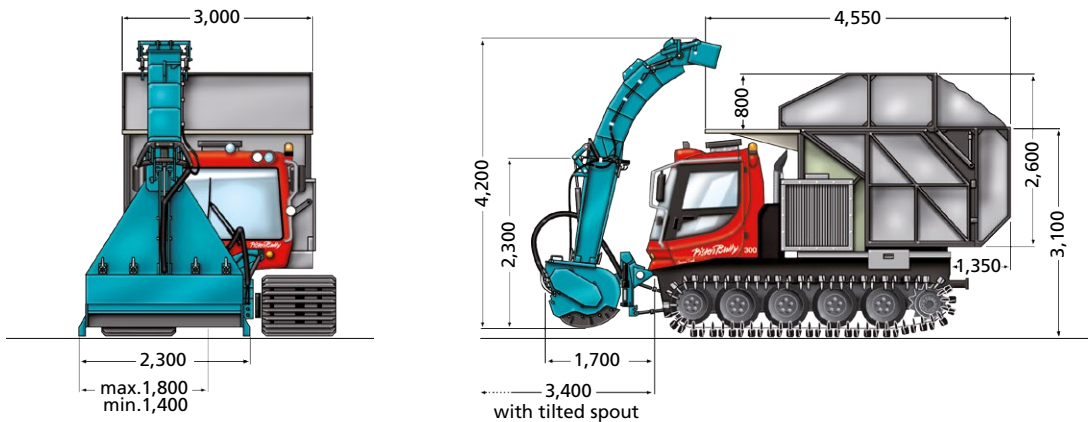
### Lifting power and dimensions



13



## Transport



### Quick and easy loading and unloading

Depending on the equipment version, the PistenBully GreenTech can be transported on a flat-bed trailer (load platform height 0.8–1.0 m).

For harvesting > 200 t/h, it may be possible to use the towing vehicle as an additional rolling vehicle.

Engine	PistenBully 300 GreenTech	PistenBully 300 Polar GreenTech
Type	Mercedes Benz OM 926 LA	Mercedes Benz OM 457 LA
Number of cylinders	6	
Displacement	7,200 cm <sup>3</sup>	11,970 cm <sup>3</sup>
Output, ECE rating	240 kW / 330 hp	315 kW / 430 hp
Max. torque	1,300 Nm at 1,200 – 1,600 rpm	2,000 Nm at 1,200 rpm
Fuel consumption	at least 11 l/h	
Tank capacity	190 l	210 l

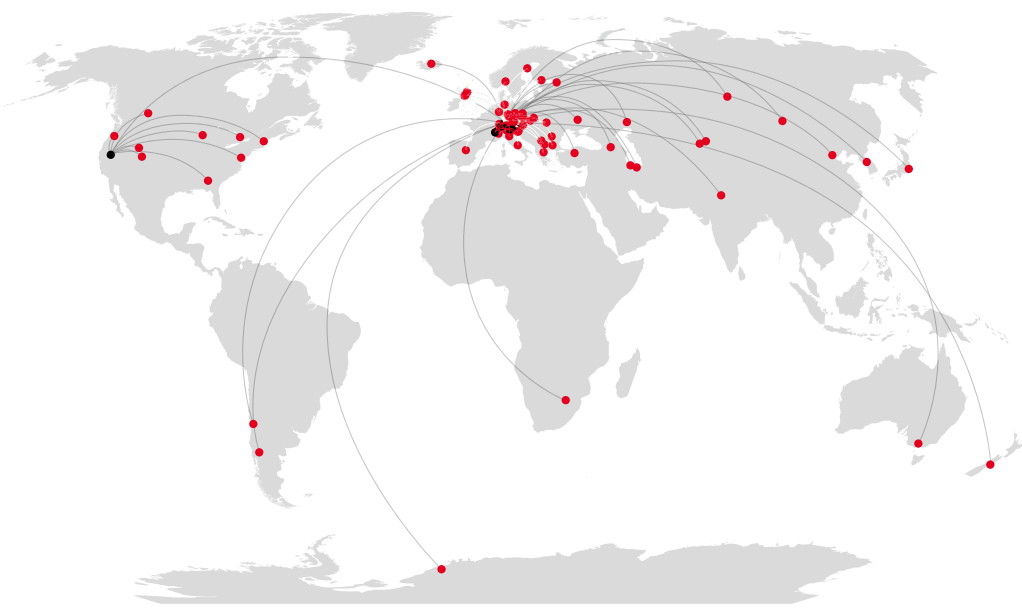
Driving characteristics	PistenBully 300 GreenTech	PistenBully 300 Polar GreenTech
Speed	0 – 19 km/h, continuously variable	

Dimensions	PistenBully 300 GreenTech	PistenBully 300 Polar GreenTech
Track width	2,300 mm	2,400 mm
Width over X-Track chain	3,000 mm	3,100 mm
Overall height (incl. air conditioning)	3,200 mm	
Ground clearance	approx. 350 mm	
Load area	2,300 mm x 1,920 mm (3.9m <sup>2</sup> )	

Weights	PistenBully 300 GreenTech	PistenBully 300 Polar GreenTech
Net weight with X-Track chain	11,000 kg*	11,000 kg*
Spec. ground pressure with X-Track chain	0.160 kg/cm <sup>2</sup>	0.187 kg/cm <sup>2</sup>
Spec. ground pressure with mulcher**	0.098 kg/cm <sup>2</sup>	0.113 kg/cm <sup>2</sup>
Spec. ground pressure with flail mulcher and tipping container**	0.118 kg/cm <sup>2</sup>	0.134 kg/cm <sup>2</sup>
Load volume, tipping container	approx. 19m <sup>3</sup>	

\* incl. 2,000 kg additional weight

\*\*dependent on track version



## The global PistenBully network.

**Kässbohrer Geländefahrzeug AG**  
 Kässbohrerstraße 11  
 88471 Laupheim  
 Phone +49 (0)7392 900-0  
 Fax +49 (0)7392 900-445  
 info@pistenbully.com  
 www.pistenbully.com

**Switzerland**  
 Kässbohrer Geländefahrzeug AG  
 Bruneggerstraße 45  
 5103 Möriken  
 Phone +41 (0)62 88770-50  
 Fax +41 (0)62 88770-51  
 info@pistenbully.ch  
 www.pistenbully.ch

**Austria**  
 Kässbohrer Austria GmbH  
 Garnei 173  
 5431 Kuchl  
 Phone +43 (0)6244 4001-0  
 Fax +43 (0)6244 4001-11  
 office@pistenbully.at  
 www.pistenbully.at

**Italy**  
 Kässbohrer Italia S. r. l.  
 Via Aeroporto Francesco Baracca, 10  
 39100 Bolzano  
 Phone +39 0471 93-3027  
 Fax +39 0471 93-2975  
 info@pistenbully.it  
 www.pistenbully.it

**France**  
 Kässbohrer E.S.E.  
 455 Route de Marais  
 ZAC Porte de Tarentaise  
 73790 Tours-en-Savoie  
 Phone +33 (0)479 1046-10  
 Fax +33 (0)479 1046-40  
 info@pistenbully.fr  
 www.pistenbully.fr

**USA**  
 Kässbohrer All Terrain Vehicles Inc.  
 8850 Double Diamond Parkway  
 89521 Reno, Nevada  
 Phone +1 (0)775 857-5000  
 Fax +1 (0)775 857-5010  
 contact@pistenbullyusa.com  
 www.pistenbullyusa.com

A note on the information in this catalogue: Changes may have been made to the product since this document went to press. The images also show accessories and special equipment which are not supplied as standard. Slight variations in colour may occur as a result of the printing process. Any statements regarding the statutory, legal and tax regulations and their effects are only valid for the Federal Republic of Germany. For the definitive latest version, please ask your contact at Kässbohrer Geländefahrzeug AG.



KÄSSBOHRER GELÄNDEFahrZEUG AG



This company is ISO 14001 and ISO 9001 certified.

PistenBully and SNOWsat are registered trademarks of Kässbohrer Geländefahrzeug AG.